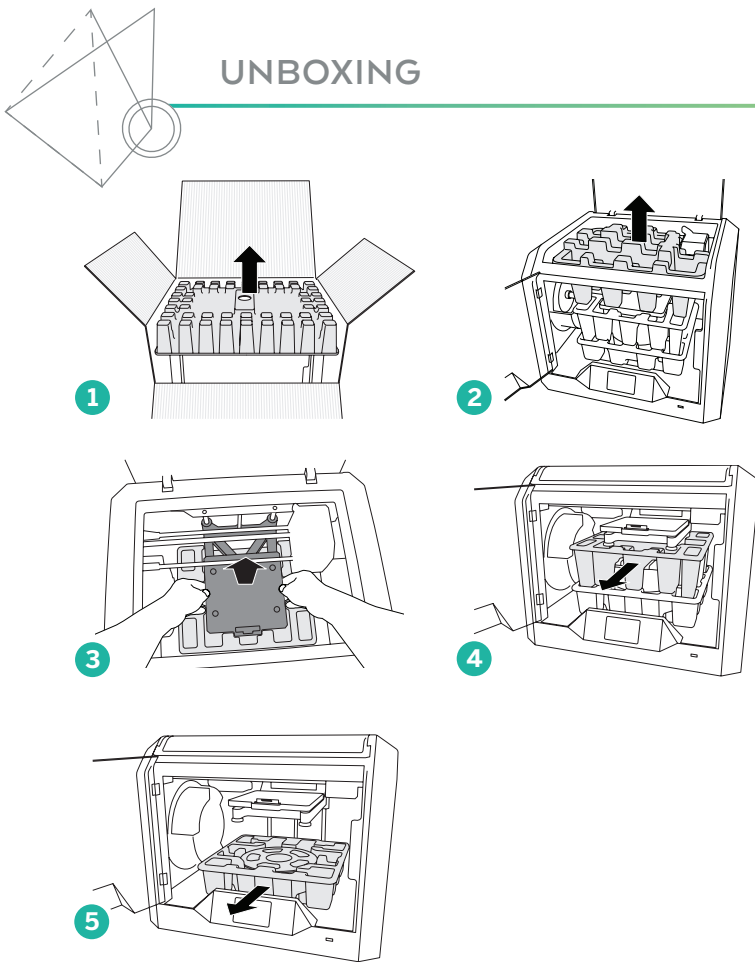


DREMEL[®] DIGILAB

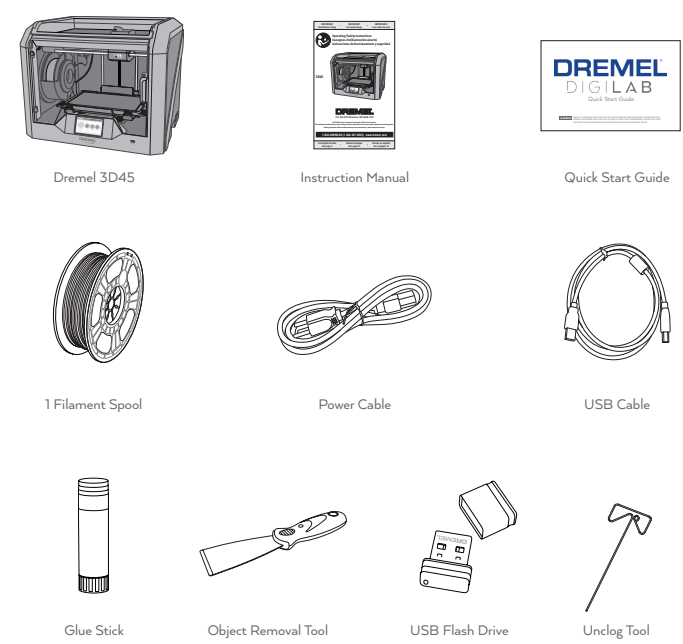
3D45 Quick Start Guide

WARNING READ ALL OPERATING/SAFETY INSTRUCTIONS IN THE MANUAL AND FAMILIARIZE YOURSELF WITH THE DREMEL 3D45 BEFORE SETUP AND USE. FAILURE TO COMPLY WITH THE WARNINGS AND INSTRUCTIONS MAY RESULT IN FIRE, EQUIPMENT DAMAGE, PROPERTY DAMAGE, OR PERSONAL INJURY.

UNBOXING

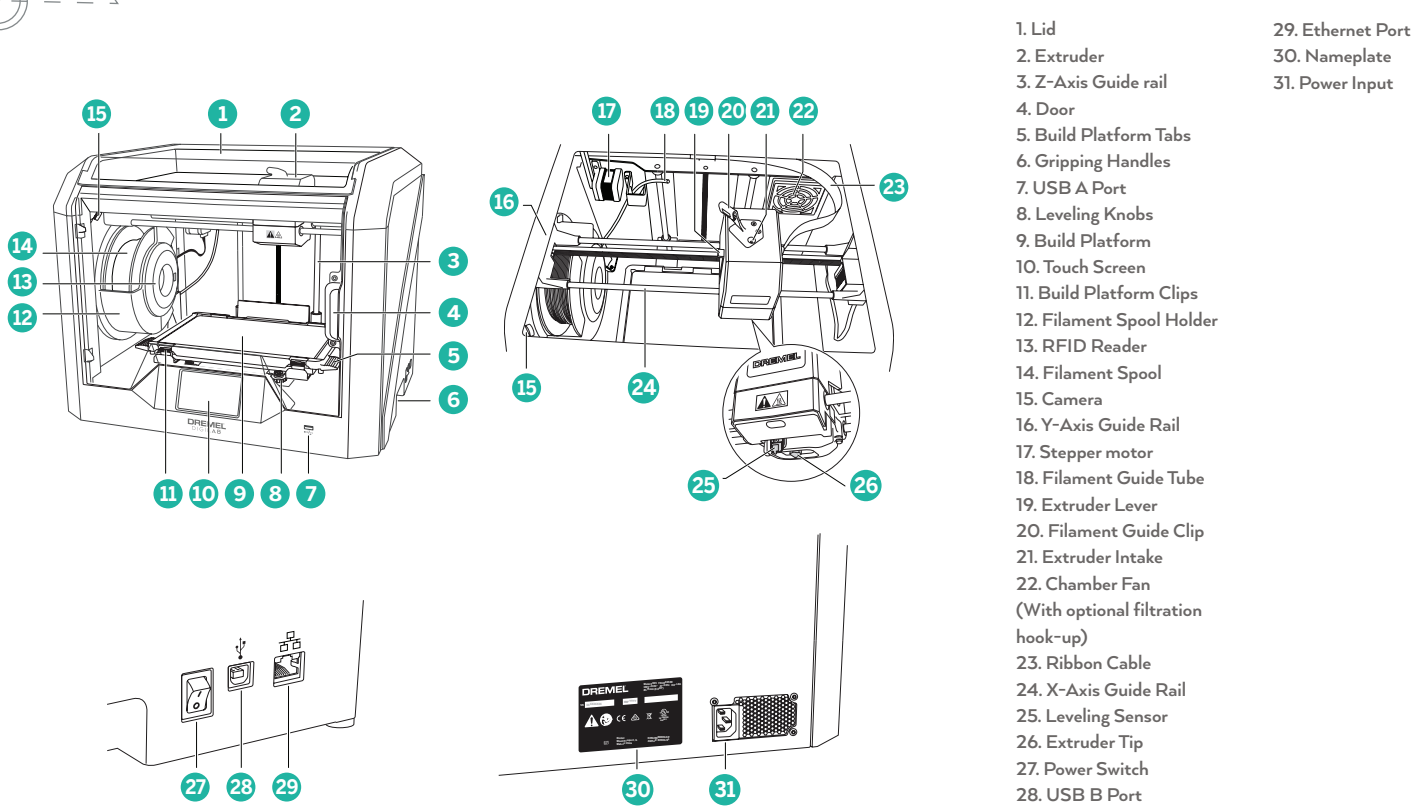


KIT CONTENTS



TIP: Save your Dremel 3D45 packaging for future transportation and storage.

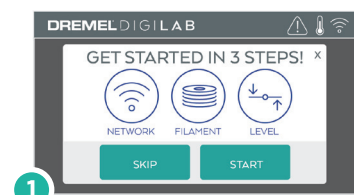
KNOW YOUR DREMEL 3D45



GETTING READY TO BUILD

TURN ON YOUR PRINTER

1. Follow the instructions to select your country, language, and read/accept the End User License Agreement (EULA).

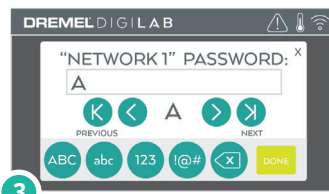
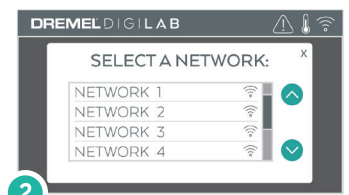
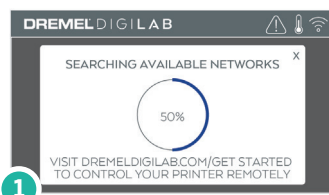


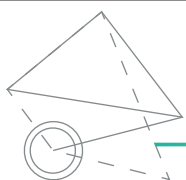
2. Tap "Start" to begin.

Note: If you tap "Skip" or exit out of the quick start configuration, please go to DremelDigiLab.com/GetStarted or read the 3D45 manual to configure your printer from the Home page.

WIFI

3. Connect your printer to your wireless network so you can build from anywhere.



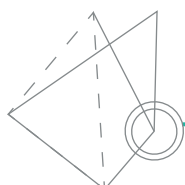
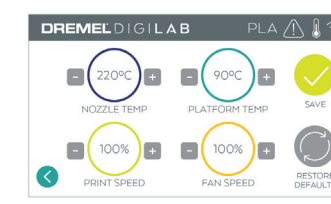
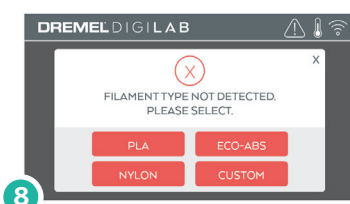
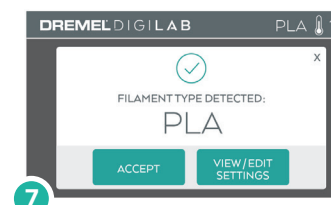
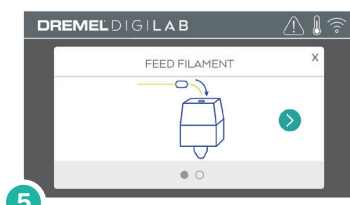
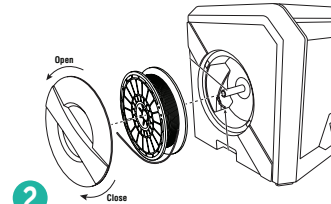
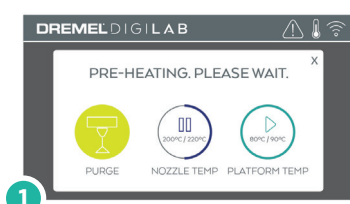


FILAMENT

WARNING OBSERVE ALL PROVIDED WARNINGS AND SAFETY INSTRUCTIONS WHEN USING THE DREMEL 3D45. FAILURE TO DO SO MAY RESULT IN FIRE, EQUIPMENT DAMAGE, PROPERTY DAMAGE OR PERSONAL INJURY.

FILAMENT INSTALLATION

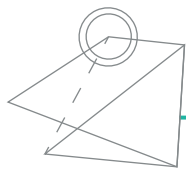
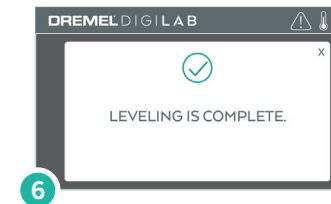
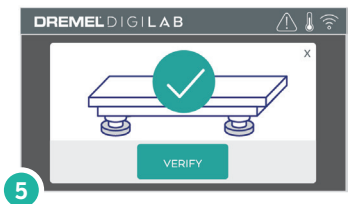
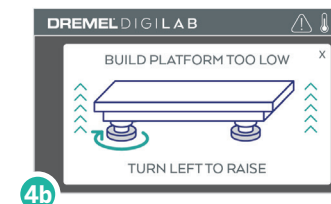
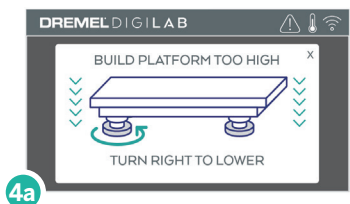
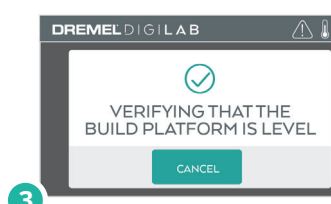
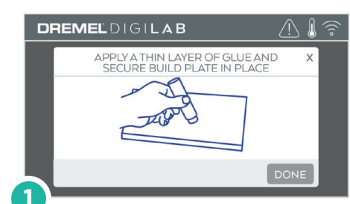
1. Tap "Filament" on your Dremel 3D45's touch screen and wait for extruder to heat.
2. Twist spool door counter-clockwise and remove.
3. Place filament spool onto spool holder with spool being fed from the bottom towards the back of the Dremel 3D45.
4. Thread filament through filament guide tube all the way to the extruder area and close spool door.
5. When Feed Filament screen appears, tap "Next" and thread filament into extruder intake until extruder feeds through on its own.
6. When new filament appears from extruder tip, tap "Done" to complete filament load process.
7. When you place a roll of Dremel filament into the spool holder, the printer will auto-recognize the filament type and optimize the printer settings accordingly.
8. You have the option to manually alter print settings after you change filament. Please check all settings if manually entered, as improper settings may cause prints to fail, property damage, or personal injury. Please see Page 25 in the 3D45 instruction manual for recommended print settings for Dremel filament types.



LEVELING

LEVELING BUILD PLATFORM

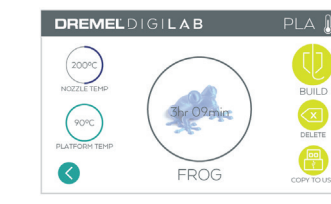
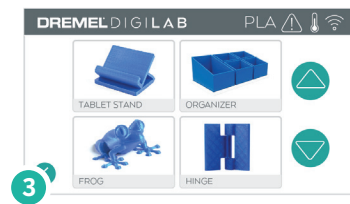
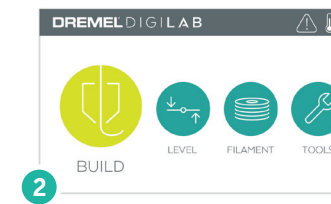
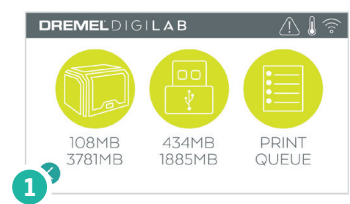
1. Apply a thin layer of glue with the provided glue stick to the build platform and secure in place.
2. Tap "Level" on your Dremel 3D45's touch screen.
3. 3D45 will first check the level at the back of the build platform, then move to the first leveling position.
4. The touchscreen will indicate if your build platform is too high or too low.
 - a) If the build platform is too high, turn knob to the right until you hear a "beep". Tap "Verify" to check the bed level again.
 - b) If the build platform is too low, turn knob to the left until you hear a "beep". Tap "Verify" to check the bed level again.
5. Repeat step above for the second levelling position.
6. When the build platform is level, extruder will automatically move to the calibration position and complete the levelling process.



BUILDING

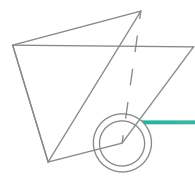
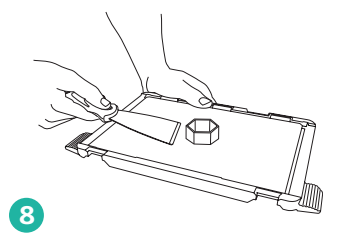
BUILDING OUT OF THE BOX

1. On the main screen, tap the "Build" option. Then tap the machine icon to select from pre-installed models.
2. Tap on the model file you would like to build and tap "Build".
3. Your Dremel 3D45 will align the extruder with the build platform and will begin heating the extruder and build platform.
4. Once the correct temperature is reached, your model will begin to build.
5. Touch screen will display "Build Complete".



REMOVING YOUR OBJECT FROM THE BUILD PLATFORM

6. Wait for the extruder and platform to cool before removing your object.
 7. With the object still attached, remove build platform from the build area.
 8. Use your hand to peel your object from the build platform. If needed, gently use the object removal tool to remove object from build platform.
- CAUTION: Build platform may be hot immediately after print finishes, hold platform on edges.



MAKE YOUR OWN

For info on designing, slicing, and printing your own models go to...

DremelDigiLab.com/GetStarted

BEST PRACTICES

1. ALWAYS USE PROVIDED GLUE STICK.
2. Ensure your platform is level (before you begin building your object).
3. Ensure spool is tangle free, installed properly and can rotate freely.
4. When loading filament, allow Dremel 3D45 to extrude until material is consistent with the installed filament color.
5. It is important to stay near your Dremel 3D45 during operation and watch the Dremel 3D45 begin building objects. (If a situation occurs, select the STOP icon right away, to stop any further building).
6. Remove the build platform before removing the object.
7. Use object removal tool gently to avoid damaging the build platform or object.

3D45 RESOURCES

Quick Start Guide	In box and www.dremeldigilab.com/GetStarted
3D45 Website	www.dremeldigilab.com
3D45 Customer Support	1-844-4DRML3D (1-844-437-6533)
Desktop Slicing Software	Installed from www.dremeldigilab.com or from USB flash drive provided with the Dremel 3D45
More Details on 3D45 Setup and Maintenance	Manual in box and on www.dremeldigilab.com